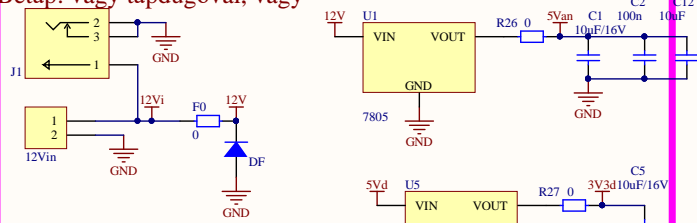
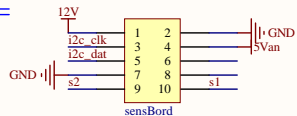
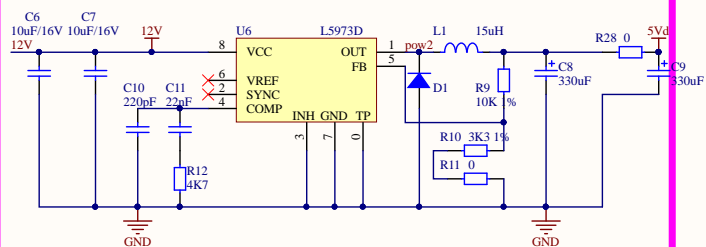


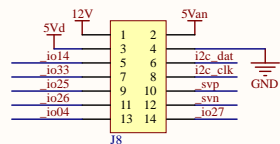
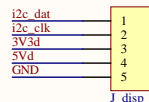
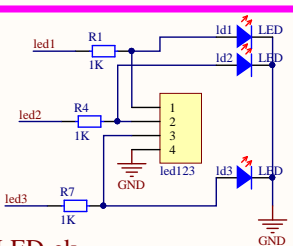
Betáp: vagy tápdugóval, vagy



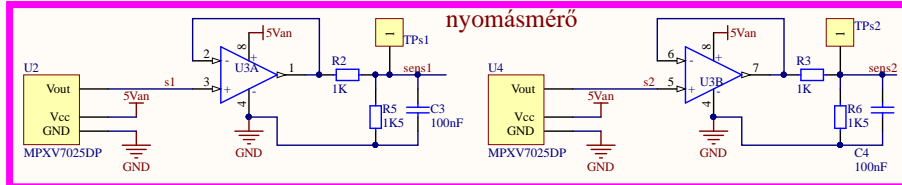
csavaros csatlakozóval



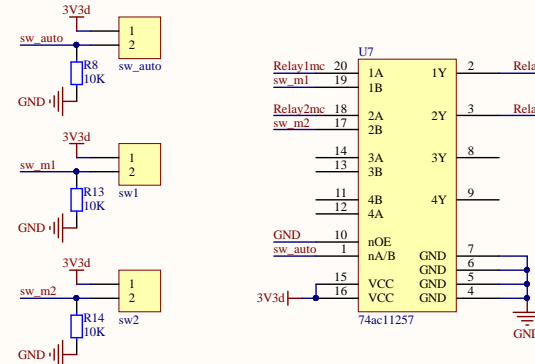
kapcsolók, LED-ek



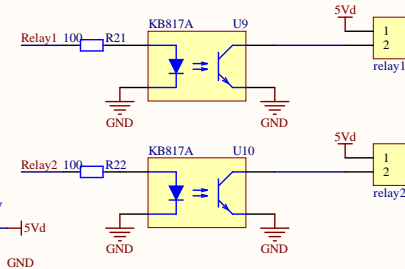
nyomásmérő



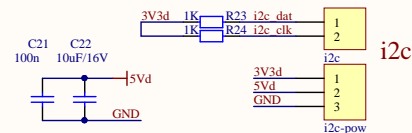
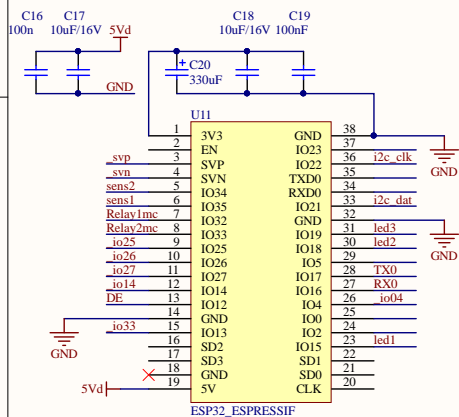
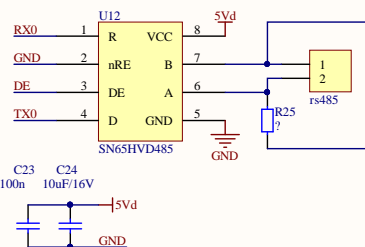
kapcsolók, +logika



Relé kivezetések



RS485



Title		
Size	Number	Revision
A3		
Date:	2020. 07. 10.	Sheet of
File:	D:\work\Sheet\motorDriver.SchDoc	Drawn By:

9-12V
DC
input

12Vin

rs485

relay2
sr2 5V

relay1
sr1 5V

swa 3v3

sw1 3v3

sw2 3v3

i2c

iCK iDT - 5V 3V3

led123

MV IMCU
2020 v3.1

gnd 5V 3V3 iCK iDT disp

io04 io26 io25 io33 io14 5V 12V
iCK iDT gnd 5Va

sensBord
12V gnd
iCK 5Va
iDT 5V
gnd S2
nc